



# SARS-CoV-2 Antigen Test

(Colloidal Gold)

Cat.No.	Product Name	Description
SC6h1-01	SARS-CoV-2 Rapid Antigen Test Kit, Nasal Swab	1 Reaction/Box
SC6h3-01	SARS-CoV-2 Rapid Antigen Test Kit, Saliva	1 Reaction/Box
SC6h2-50	SARS-CoV-2 Rapid Antigen Test Kit, Nasopharyngeal Swab	50 Reactions/Box

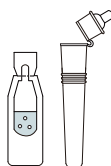
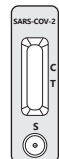
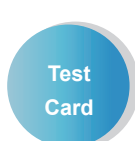
## Product Advantages:

- Direct interpretation of the results, without professionals and equipment.
- Easy to store and transport, room temperature storage (2-30°C) for 12 months.
- Easy to Use, only need to add sample and read.
- Fast Detection: result in 20 minutes.
- Individually packaged for easy distribution.
- To meet the needs of home testing and on-site testing, the products are complete, including sampling, sample pretreatment and other consumables, which can be sampled and tested anytime and anywhere.

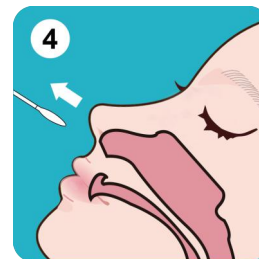
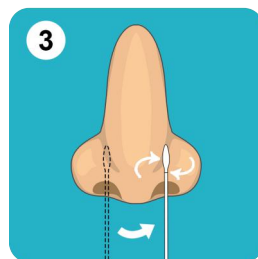
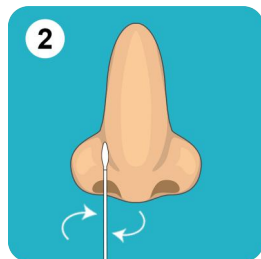
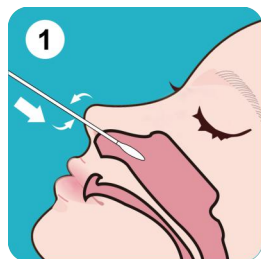
**Intend Use:**

The product is used for the detection of N protein antigen from SARS-CoV-2 in nasal from individuals who are suspected of COVID-19. Antigen detection is generally used for the detection of samples in the acute infection period, that is, within 7 days of the onset of symptoms in suspected patients.

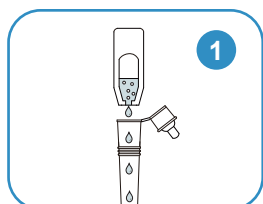
**Product Component:**



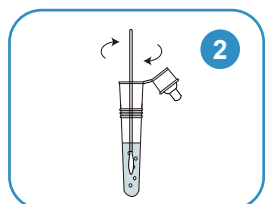
**Sampling Steps:**



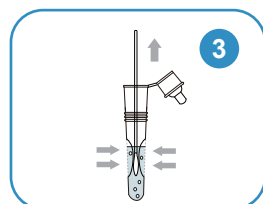
**Detection Steps:**



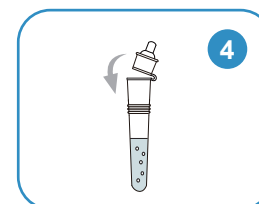
Open the extraction reagent, pour the reagent into extraction tube.



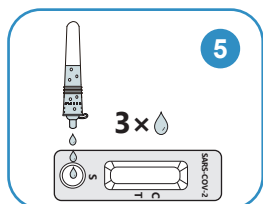
Insert swab into extraction tube, stir 10 times then let it stand for 1 min.



Squeeze tube wall ensure the head of swab is to be squeezed a few times, then remove the swab.



Cover the cap of extraction tube.

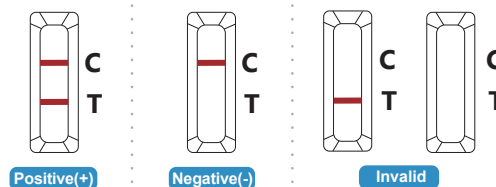


Put the test card on the table horizontally. Vertically invert the extraction tube, let the liquid outlet aim the hole of sample collection of the test card. Squeeze the tube wall, drop 3 drops (about 80uL) into the hole of sample collection, you can check the result until 15 mins.

*Warning: the results lapsed after 20 minutes.*

**Determination of test results:**

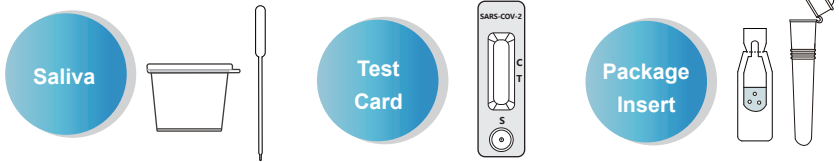
- **Positive(+):** Red bands appear at both of T and C line in 15 minutes.
- **Negative(-):** A red band appears at C line while no red band appears at T line in 15 minutes after sample loading.
- **Invalid:** As long as no red band appears at C line, it indicates that the test result is invalid, and should retest the sample with another test card.



**Intend Use:**

The product is used for the detection of N protein antigen from SARS-CoV-2 in saliva from individuals who are suspected of COVID-19. Antigen detection is generally used for the detection of samples in the acute infection period, that is, within 7 days of the onset of symptoms in suspected patients.

**Product Component:**



**Sampling Steps:**

1

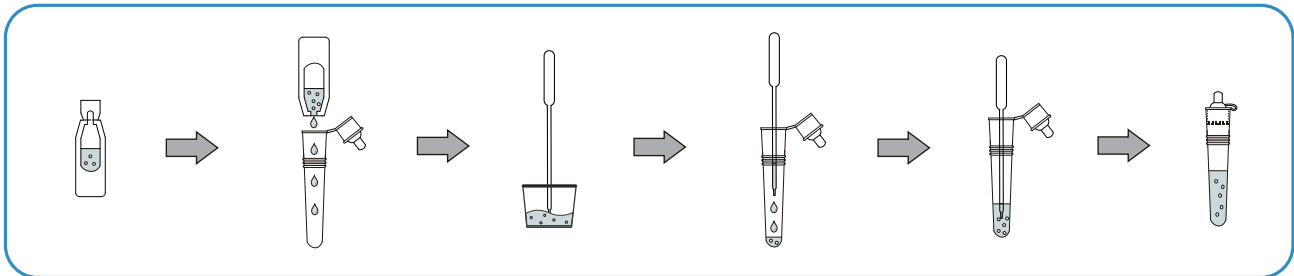
Rinse your mouth with water 30 minutes before sampling, and do not eat, smoke, drink alcohol or drinks after rinsing.



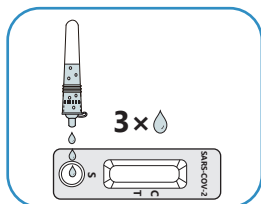
2

Place the tip of tongue against the upper or lower tooth root to enrich saliva, and spit saliva into a plastic container gently until the liquid saliva fills the bottom of the container (no bubbles).

**Detection Steps:**



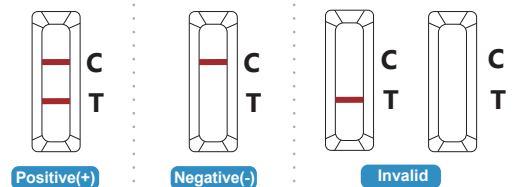
1. Open the package of single extraction reagent and squeeze the bottle to make all extraction reagent into the extraction tube.
2. The collected saliva was sucked to the straw, and 7 drops (about 200µl) was dripped into the solution of the sample extraction tube. Squeeze the extraction tube by hand to blend the liquid.
3. Cover the dropper and wait for inspection.



Put the test card on the table horizontally. Vertically invert the extraction tube, let the liquid outlet aim the hole of sample collection of the test card. Squeeze the tube wall, drop 3 drops (about 80µL) into the hole of sample collection, you can check the result until 15 mins.  
*Warning: the results lapsed after 20 minutes.*

**Determination of test results:**

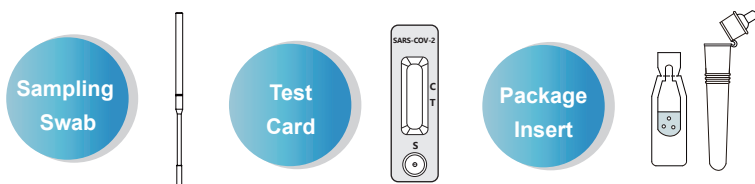
- **Positive(+):** Red bands appear at both of T and C line in 15 minutes.
- **Negative(-):** A red band appears at C line while no red band appears at T line in 15 minutes after sample loading.
- **Invalid:** As long as no red band appears at C line, it indicates that the test result is invalid, and should retest the sample with another test card.



**Intend Use:**

The product is used for the detection of N protein antigen from SARS-CoV-2 in nasopharyngeal swabs from individuals who are suspected of COVID-19. Antigen detection is generally used for the detection of samples in the acute infection period, that is, within 7 days of the onset of symptoms in suspected patients.

**Product Component:**

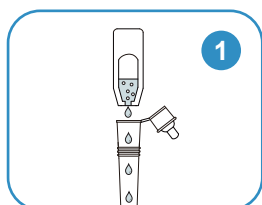


**Sampling Steps:**

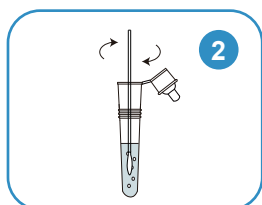
1. With the patient seated, if possible, tilt the head back 70 degrees.
2. Gently insert the nasopharyngeal swab provided in the kit into the nostril along the septum floor of the nose extending straight back until the posterior nasopharyngeal is reached (distance from nostrils to external opening of ear). Roll the swab 5 times along the mucosa inside the nostril to ensure that both mucus and cells are collected.
3. Withdraw the swab from the nasal cavity. The specimen is now ready for preparation using the extraction reagent provided in the kit.



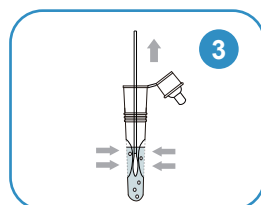
**Detection Steps:**



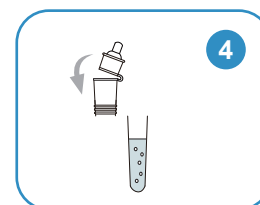
Open the extraction reagent, pour the reagent into extraction tube.



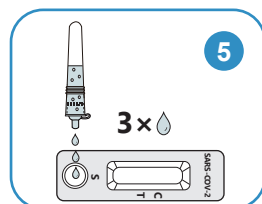
Insert swab into extraction tube, stir 10 times then let it stand for 1 min.



Squeeze tube wall ensure the head of swab is to be squeezed a few times, then remove the swab.



Cover the cap of extraction tube.



Put the test card on the table horizontally. Vertically invert the extraction tube, let the liquid outlet aim the hole of sample collection of the test card. Squeeze the tube wall, drop 3 drops (about 80uL) into the hole of sample collection, you can check the result until 15 mins.

*Warning: the results lapsed after 20 minutes.*

**Determination of test results:**

- **Positive(+):** Red bands appear at both of T and C line in 15 minutes.
- **Negative(-):** A red band appears at C line while no red band appears at T line in 15 minutes after sample loading.
- **Invalid:** As long as no red band appears at C line, it indicates that the test result is invalid, and should retest the sample with another test card.

